

Labeling device MVPS G3

Step-by-step instruction

Printer driver - Installation and setup

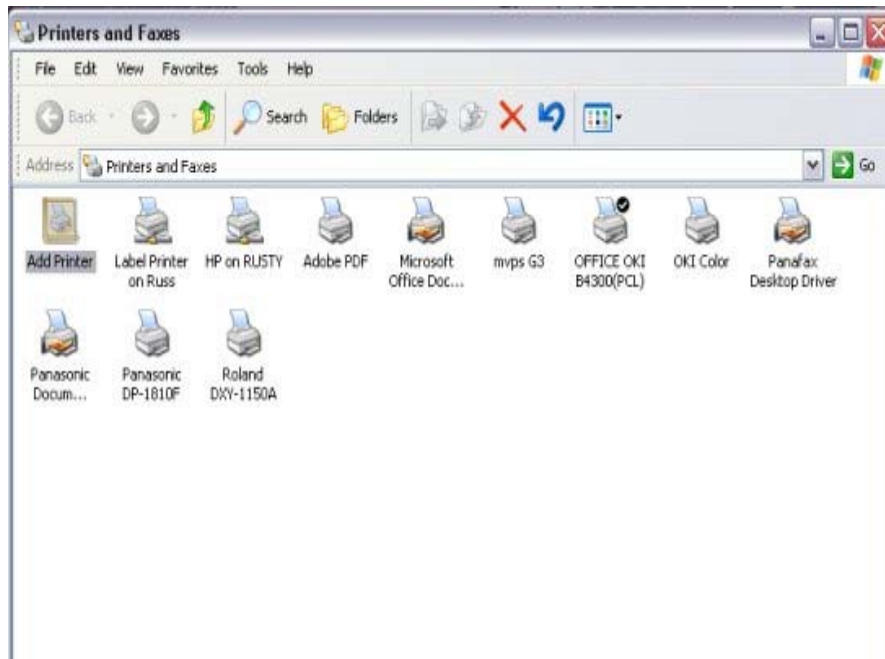
ACS 2000 – Printer settings

For operating systems: Windows 2000 / Windows XP

1. Printer driver installation

To install the printer driver follow the steps described below:

a) From the **Start-menu** choose **Settings** then click **Printers and Faxes**.



b) Double-click the **Add Printer** icon. The **Add Printer Wizard** will start.



c) Click **Next**.

d) In the next window choose **Local printer**, then click **Next**. Make sure **Automatically detect** is unchecked.



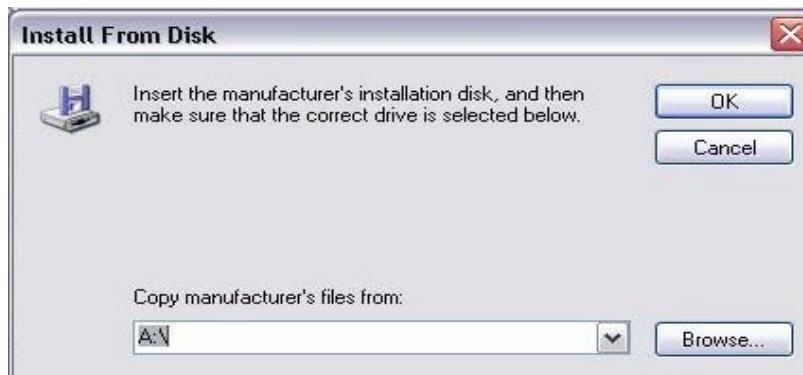
e) Choose the port the printer is attached to and click **Next**. (by default LPT1, recommended setting)



f) The printer driver is located on the ACS Software-CD, click **Have Disk** on the right side.

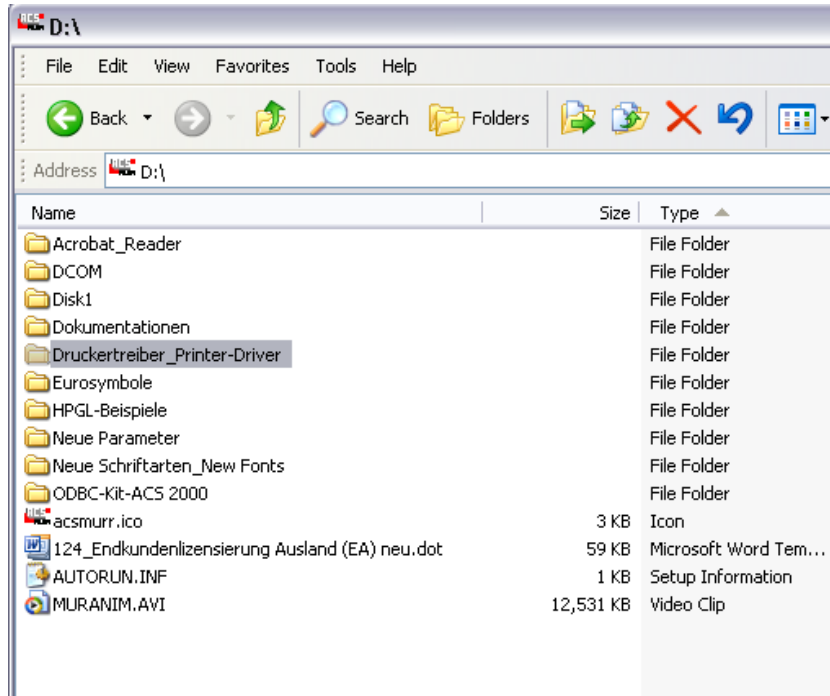


g) Click Search to set path to the directory the driver is located.



Notice: The Printer driver is provided on the ACS Software-CD. Located in the drivers directory.

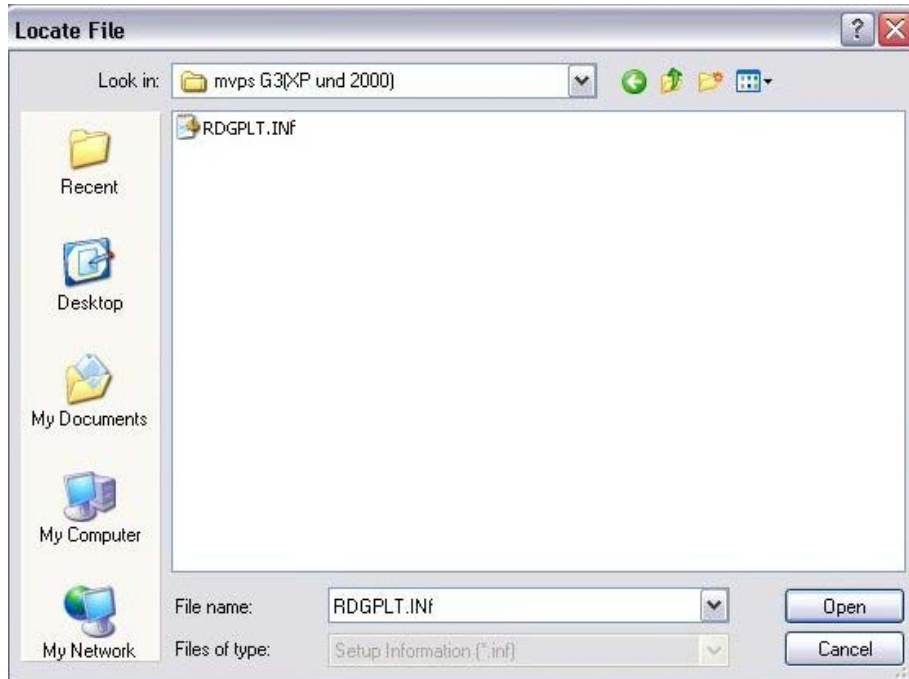
Click **Browse** and select the CD-ROM drive and click the folder **Druckertreiber_Printer-Driver**.



h) Select correct Plotter and Operating System.



Select the file **RDGPLT.INF** and click **Open** resp. **doubleclick** the filename.



i) In the following window click **Next**.



j) Keep the name already suggested and click **Next**.

Add Printer Wizard

Name Your Printer
You must assign a name to this printer.

Type a name for this printer. Because some programs do not support printer and server name combinations of more than 31 characters, it is best to keep the name as short as possible.

Printer name:

Do you want to use this printer as the default printer?

Yes
 No

< Back Next > Cancel

k) The printer will not be shared, keep this setting. Click **Next**.

Add Printer Wizard

Printer Sharing
You can share this printer with other network users.

If you want to share this printer, you must provide a share name. You can use the suggested name or type a new one. The share name will be visible to other network users.

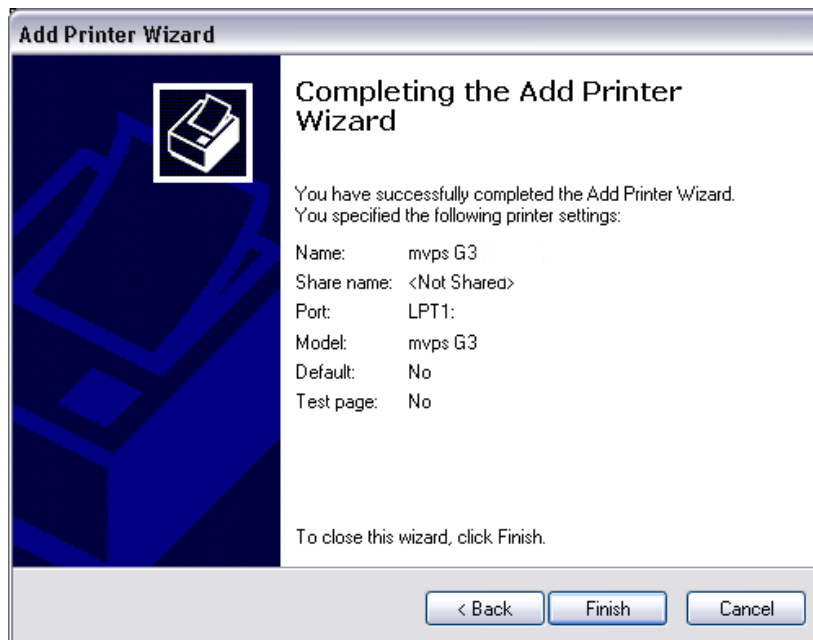
Do not share this printer
 Share name:

< Back Next > Cancel

l) Do not print a test page and click **Next** for the last step of the installation.



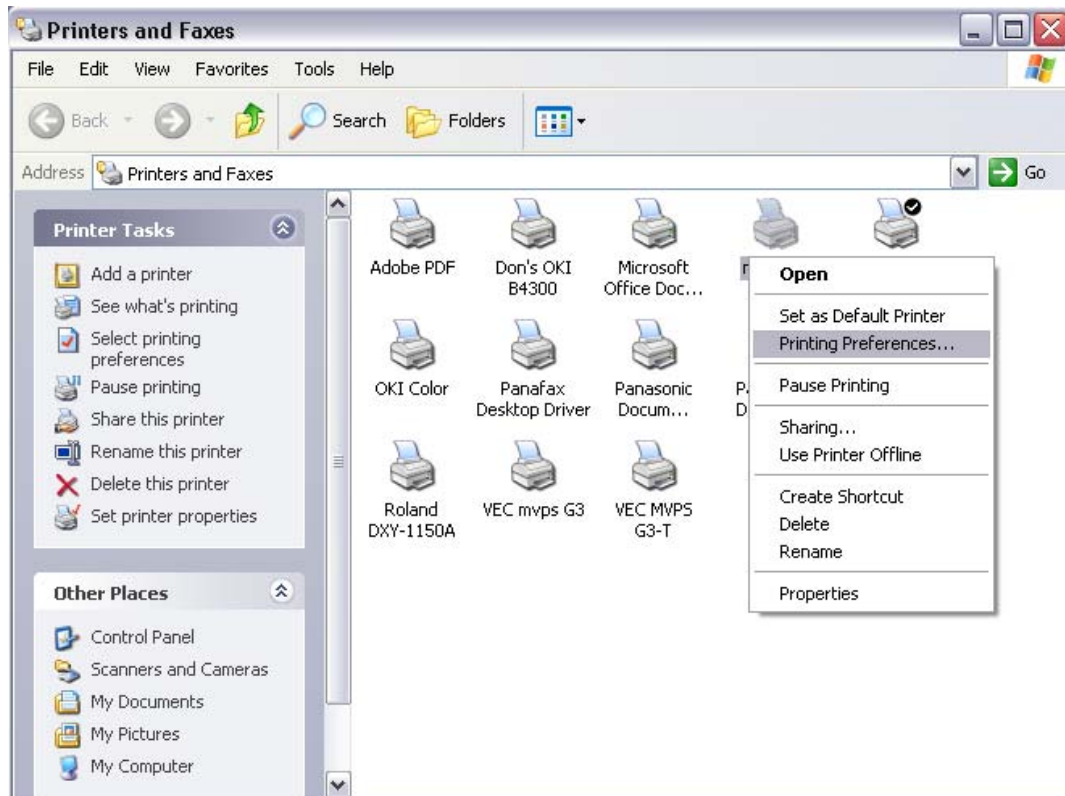
m) Click **Finish** to complete the installation with the Add Printer Wizard.



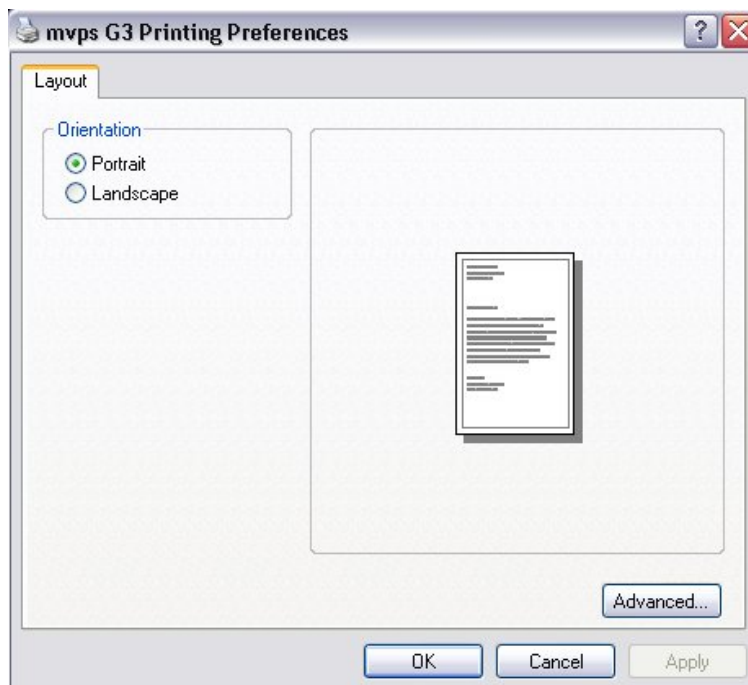
The new printer will now appear in the **Printers and Faxes** – window.

1.1. Printer setup

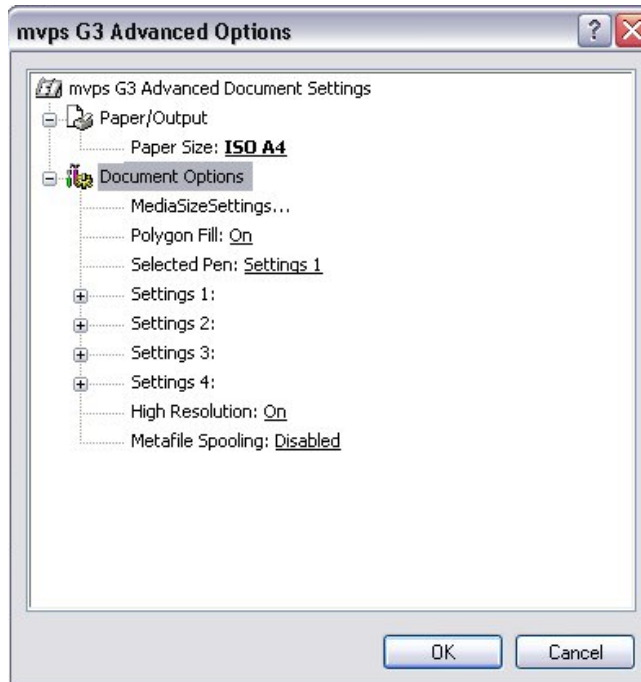
In the Printers and Faxes – window right-click the newly installed printer **MVPS G3** and select **Printing Preferences** in the menu. The following window will appear.



a) Select **Portrait**, then click **Advanced**.



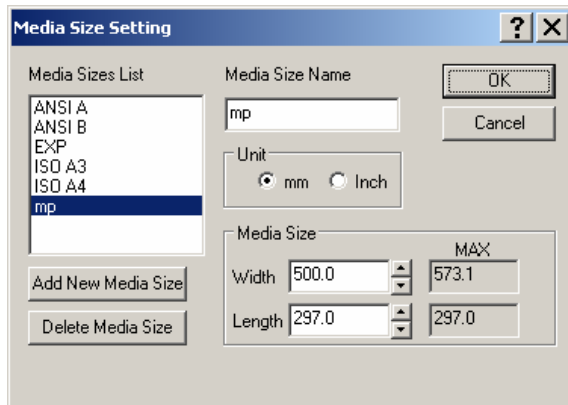
b) In the Document options list click **MediaSizeSettings.....**, then click **Properties**.



For the MVPS G3 a new media size must be created. This is done in the next window.

c) Creating a new media size.

Click the **Add New Media Size** button.

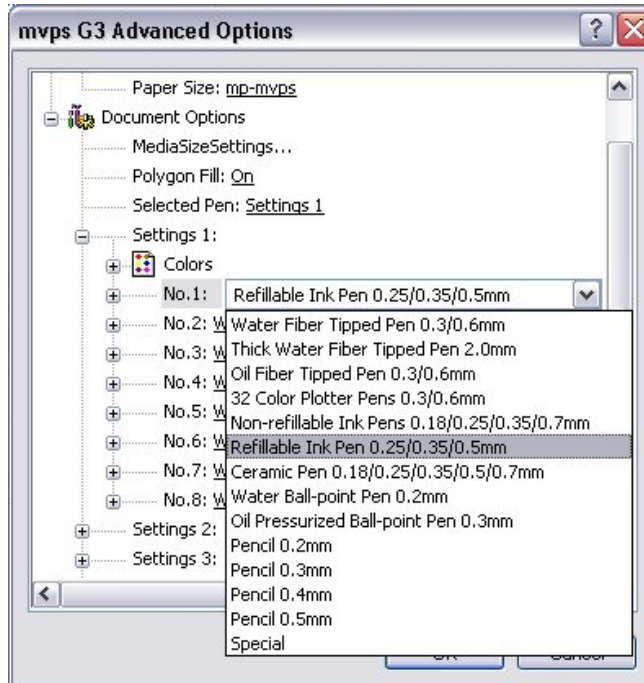


Enter 'mp' as the name of the new media size. Please note that the name must be in lowercase. For MVPS G3 plotter enter width of **500.0 mm** and for length **297.0 mm**. Then click OK. You will return to the Advanced options-window.

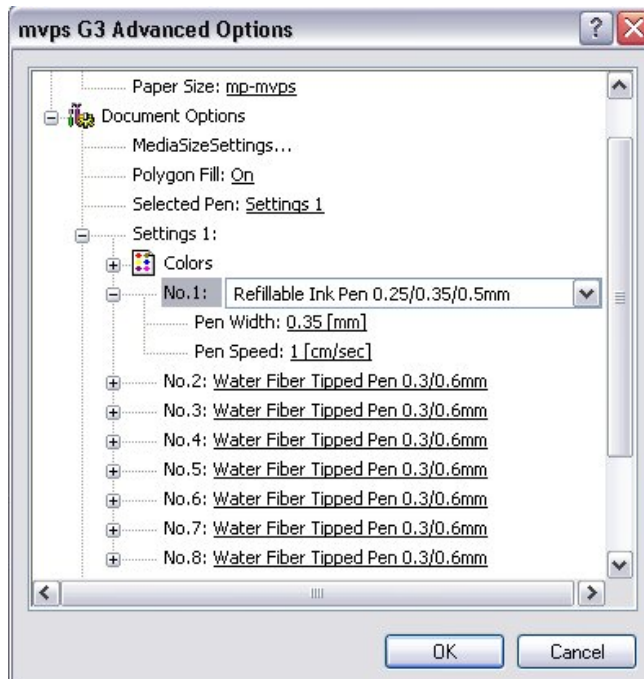
NOTE: For Roland DXY-1150 plotter enter width of **432.0 mm** and length of **297.0 mm**.
For MVPS G3-T enter width is **208.0 mm** and length is **297.0 mm**.

d) Select **'Settings 1' - 'No.1'**

Choose **'Refillable Ink Pen 0.25/0.35/0.5 mm'**.



Pen Width will be 0.35 mm,
for **Pen Speed** enter 1 cm/sec.



Now you have completed all necessary settings for the printer (plotter) in windows.
Further settings will be done in the ACS software.

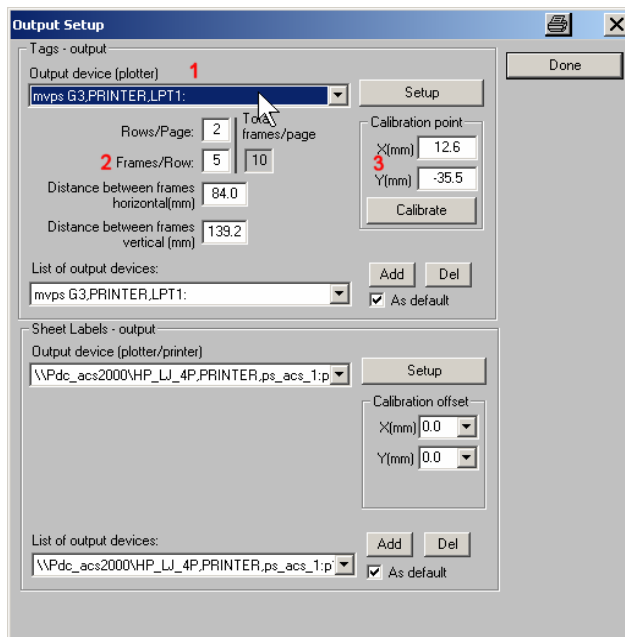
2. ACS 2000 - Printer settings

In the ACS 2000 software the following settings have to be done:

- a) Start the program and select **Output Device Setup** from the **Settings** menu.



- b) Output Setup



1. In the first pull-down-menu -Tags-output / Output device (plotter)- you will see a complete list of all installed drivers. From this list select the driver for the MVPS G3. Click the **Add** button to add the selected driver to the list below – List of output devices.

2. Enter **5** in the Frame/Row text field to have a complete number of 10 frames.
3. To adjust the plotter's calibration point, enter the following values depending on the operating system:

Device	Windows 95/98/ME/NT/2000 Windows XP - Plotter				Windows XP - Printer			
	Tags	Labels	Duomatt	Rot.	Tags	Labels	Duomatt	Rot.
All values in mm								
VEC MVPS G3 X-value			50.0	0			50.0	0
Y-value			190.0	0			-106.0	0
VEC MVPS G3-T X-value			-13.0	90			0.0	90
Y-value			285.5	90			-15.5	90
MVPS G3 X-values	12.5	48.0	50.0	0	12.5	48.0	50.0	0
Y-values	261.8	295.0	190.0	0	-35.5	0.0	-106.0	0
MVPS G3-T X-values	12.5	10.0	0.0	90	12.5	10.0	0.0	90
Y-values	261.8	296.0	280.5	90	-35.1	0.0	-15.5	90
Roland 1150(A) X-values	52.0	4.0	5.0	0	52.0	4.0	5.0	0
Y-values	262.4	295.5	190.0	0	262.4	295.5	190.0	0
Grav 10 (EGX 30/CS 20) for all Operating systems ca. X = 0 Y = 202 MediaSize 305.0 x 205.0								

***Drivers for MVPS G3 plotters can be regarded by Windows XP either as a plotter or as a printer driver. As these drivers have different calibration points it is essential to check on this after the installation. Select **Settings/Output Device Setup** and look for the device name in the list.

Device is plotter - enter values from left section. Device is printer - enter values from right section.

Click **Done**. All necessary settings are now completed.